

Hunting Information for Lopez Hill 2020

Lopez Hill Preserve is only open for hunting during the Early General season. There is no hunting allowed at Lopez Hill after November 1st. Specific WDFW Openings for 2020, GMU 414 are:



Archery	September 1-25
Muzzle Loader	September 26-October 4
Modern Firearm	October 17-November 1

Please review and follow all Washington Department of Fish and Wildlife hunting regulations and note that San Juan County is a Firearm Restriction Area. Lopez Island is Game Management Unit (GMU) 414. Our black-tailed deer may not be quite as big as the mainland deer, but there are more of them.

Lopez Hill is a 400-acre preserve with multi-use hiking, biking, and equestrian trails. Please be aware that others are recreating on public lands during hunting season. If you are successful in your endeavors, please consider the other users of Lopez Hill, and keep gut piles away from public areas. This helps to maintain a good relationship between hunters and hikers, and ends up benefiting everyone.

Access to Lopez Hill is from Lopez Sound Road, via School Road.

There are no facilities at Lopez Hill, and no camping or fires are allowed. For campgrounds, try Odlin County Park (360-468-2496) or Spencer Spit State Park (360-468-2251).

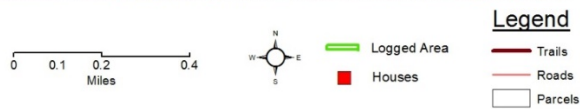
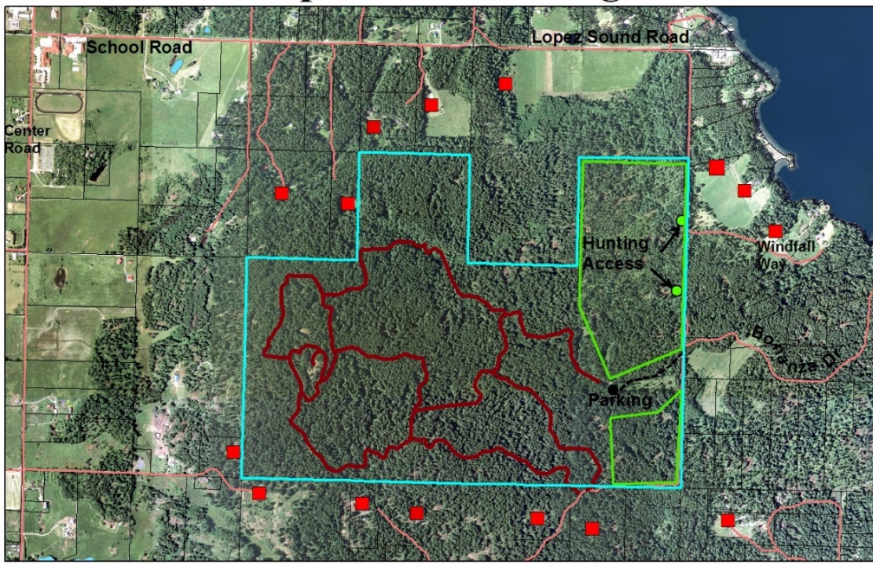
Where to hunt? The eastern edge of the preserve is recommended as the best hunting area. The forest was logged in the 1990's and has browse and logging trails. The following aerial shows good places to park along Lopez Sound Road where old skid roads provide walk-in access. This zone is separated from the hiking trails on the rest of the preserve so there is less chance of hiker interactions. Nearby houses are marked in red.

If you are interested in Late Season hunting, the only public lands open on Lopez Island are in the San Juan Islands National Monument. They have about 400 acres on the south end of Lopez. The contact person is Skeet Townsend (360-468-3754, jtownsend@blm.gov).

Written permission is required to hunt at Lopez Hill, and will be provided by Land Bank staff.

The best of luck to you! If you have any other questions, contact Amanda Wedow, Preserve Steward at amandaw@sjclandbank.org or 360-890-7447.

Lopez Hill Hunting



You can download a copy of the Lopez Hill Trail Map below from the Friends of Lopez Hill:
http://friendsoflopezhill.files.wordpress.com/2014/05/lopez_hill_trails_2012-03_web.pdf

